

EXECUTIVE SUMMARY

Cessna Citation CJ3 Gen3



TEXTRON: A GLOBAL NETWORK OF BUSINESSES

Multi-industry enterprise recognized around the world for its powerful brands

Total revenues of \$13.7 billion¹

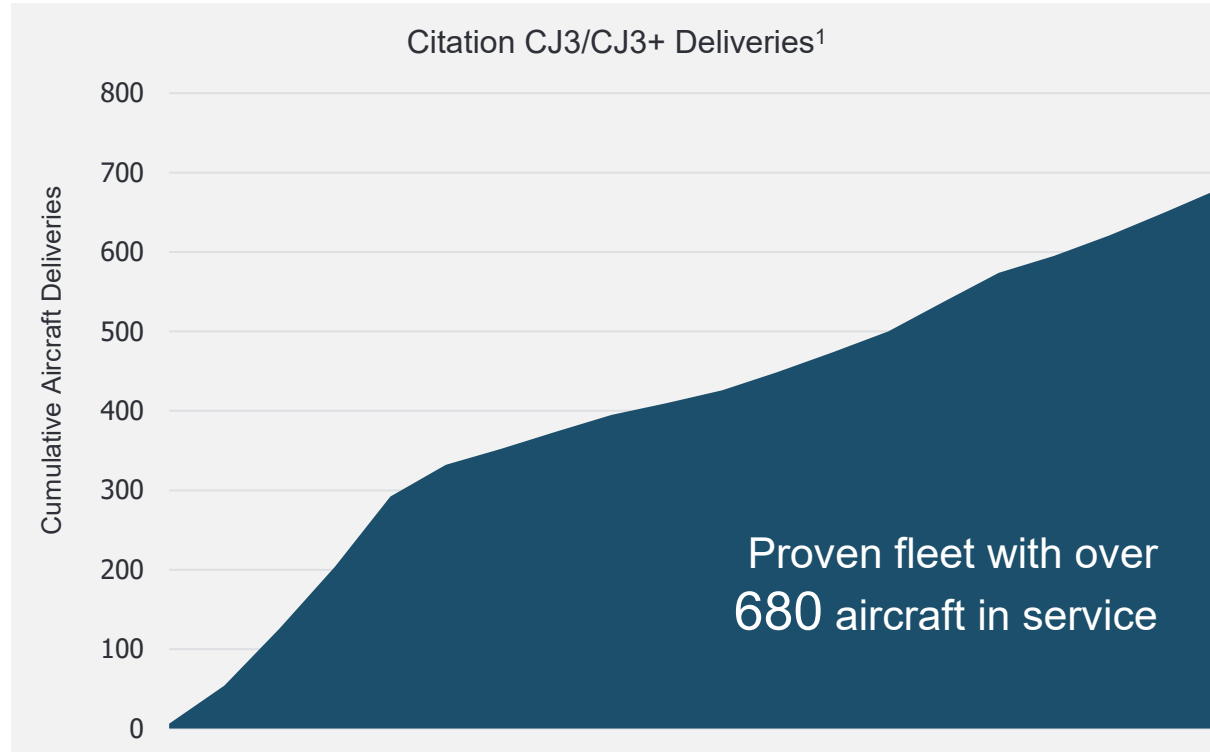
Ranked 265 on the Fortune 500 list of largest U.S. companies

Employing 33,000+ talented makers, thinkers, creators and doers worldwide



CITATION CJ3 GEN3 OVERVIEW

Our latest jet, the all-new Citation CJ3 Gen3, is designed to give you even greater command of your journey. Ambitious engineering and intuitive technology elevate your pursuits with performance that's powerful, precise and efficient.



1. GAMA Total Aircraft Deliveries through 2024



CITATION CJ3 GEN3 EXECUTIVE SUMMARY

FLIGHT DECK

Advances to the flight deck include autothrottles, Emergency Autoland and additional pilot legroom.



RELIABILITY

With over 650 CJ3-family aircraft delivered, the Gen3 brings meaningful improvements paired with time-honored CJ systems.



COMFORT

A full cabin refresh bringing improvements to the seats, wireless charging and lavatory.



PERFORMANCE

A perfect balance of payload-range, field performance and operating economics.



ECONOMICS

A comprehensive warranty and class-leading, low direct operating costs.



SERVICE

A vast, worldwide service network with 20 company-owned facilities and a team of maintenance experts 1CALL away.



CITATION CJ3 GEN3 WALKAROUND

FLIGHT DECK
Garmin G3000
Emergency Autoland
Autothrottles
GDL® 60 – Aircraft Connectivity

LAVATORY
CoolView® Skylights
Externally serviceable

ENGINES
Williams FJ44-3A
2,820 lb each



GEAR
Trailing link design

ANTI-ICE
Heated leading edge



POWER YOUR PASSION

TEXTRON AVIATION

FLIGHT DECK

Step into the cockpit and experience the height of comfort, reliability and clarity.

- Redesign of the Environmental Control System (ECS) and forward cabinetry
- Enhanced pilot legroom with 4.5-inches of additional seat travel
- Redesigned throttle quadrant and throttle handles (autothrottles)



TEXTRON AVIATION

GARMIN G3000

Proven and trusted avionics with the latest Garmin G3000 system.

Primary Flight Displays (PFD)

- 14-inch diagonal LCD widescreens
- Available Synthetic Vision Technology
- Horizontal Situational Indicator with navigation map and XM weather overlay

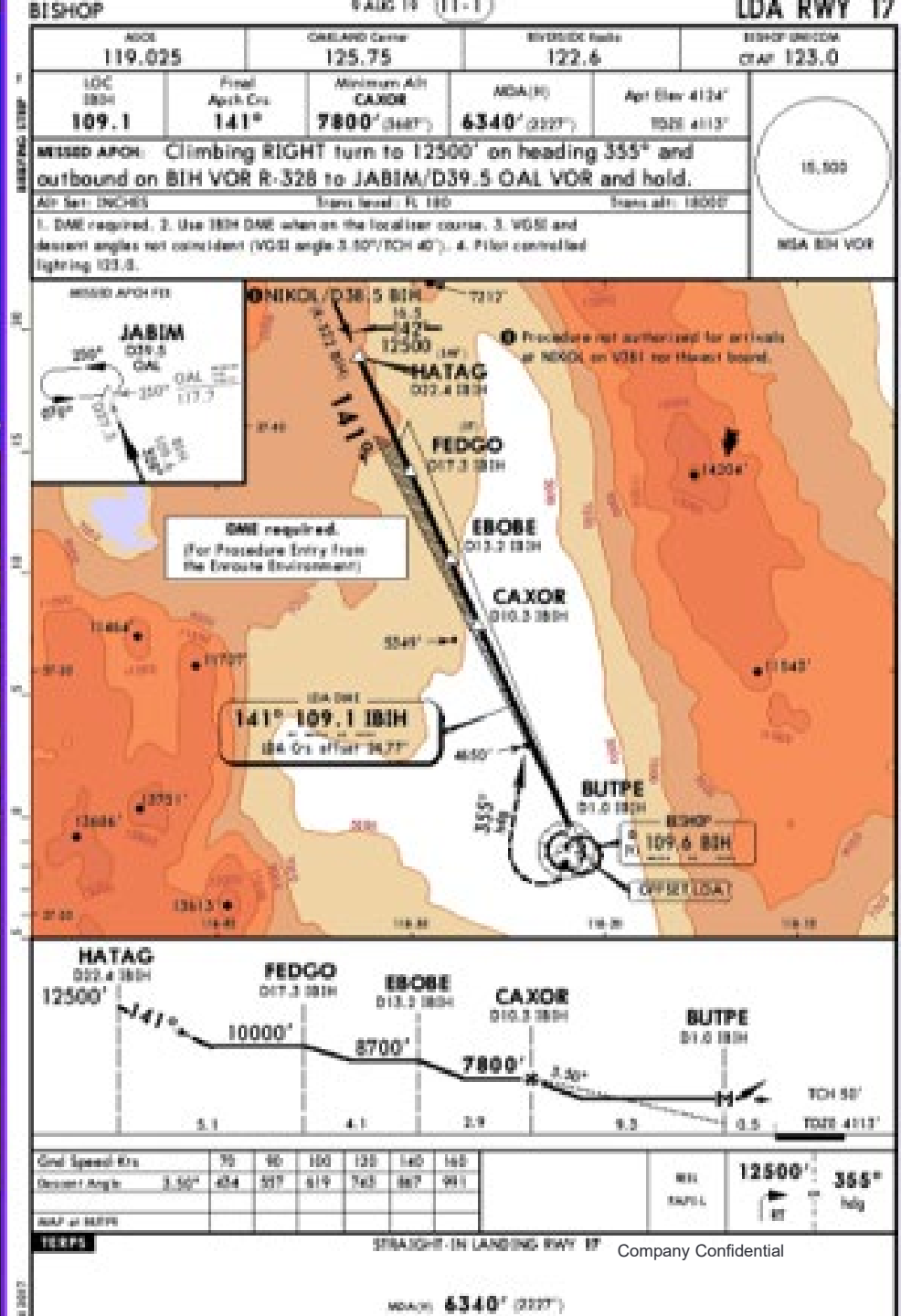


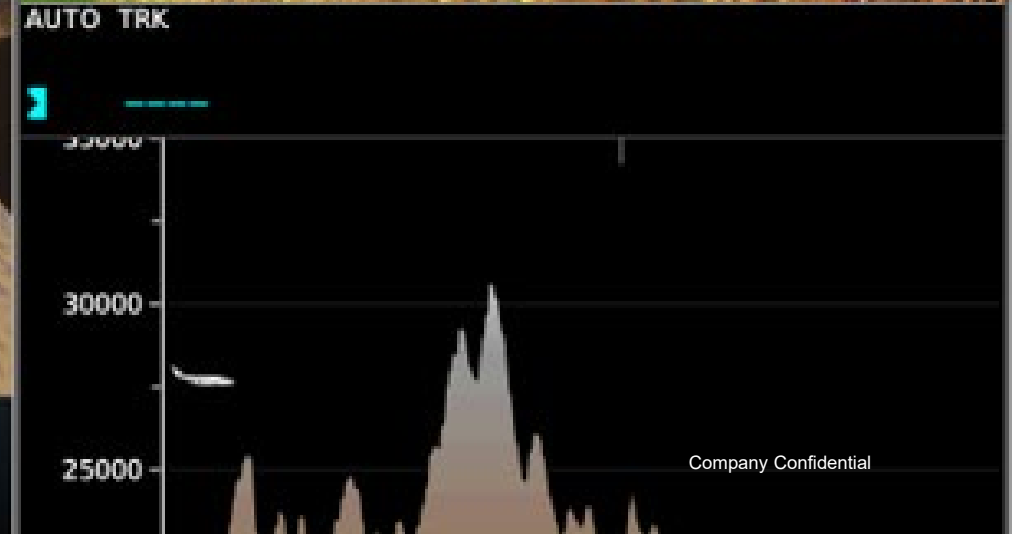


Primary Flight Display

Split screen capability

Jeppesen ChartView





Primary Flight Display
 —
 Navigation map
 Vertical Situation Display (VSD)



- Multi-Function Display
- Engine Indicating System (EIS)
- Navigation map
- Vertical Situation Display (VSD)

TEXTRON AVIATION

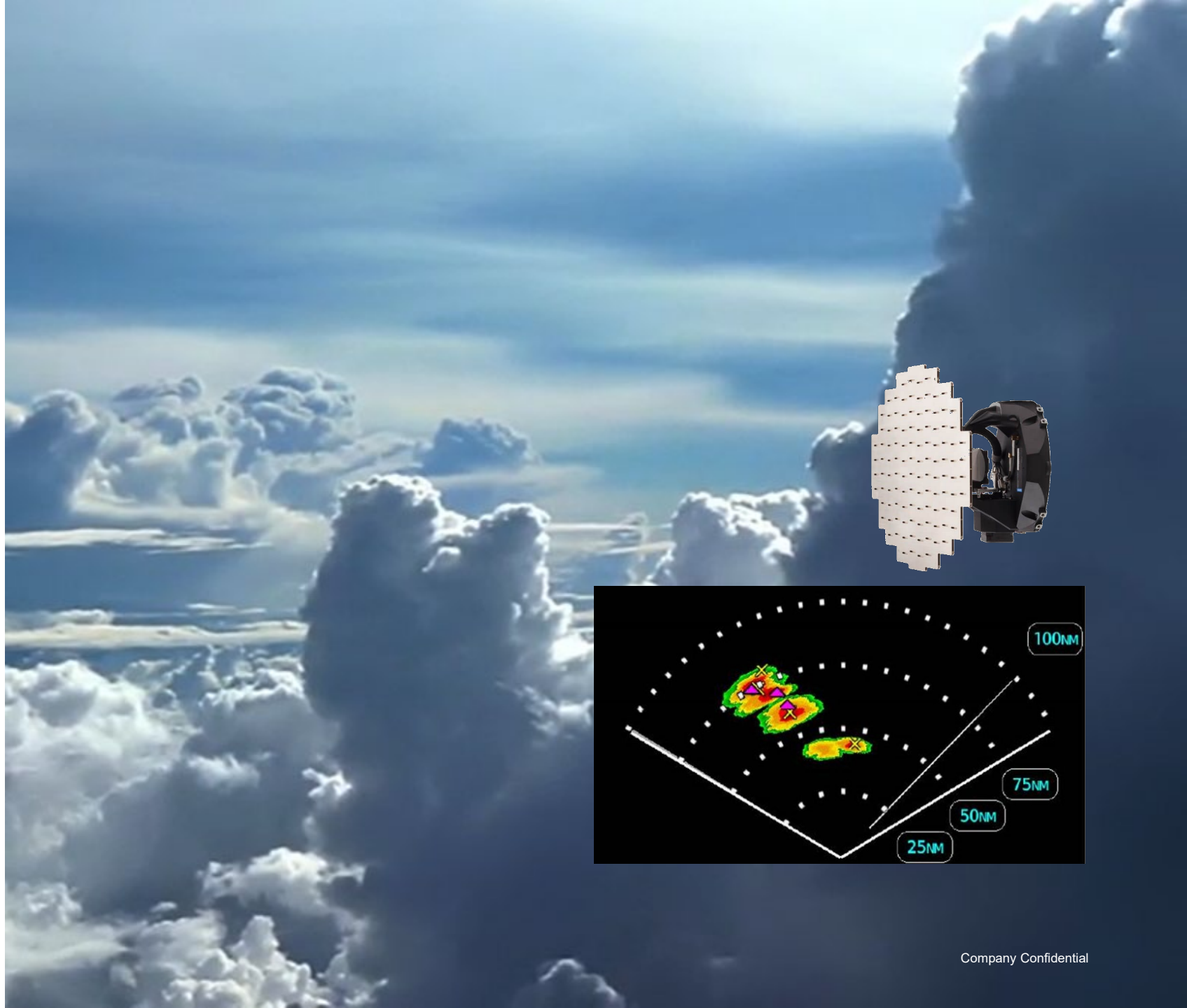
WEATHER RADAR

Powerful weather avoidance technology meets work-saving automation.

Garmin GWX 8000 StormOptix

- Volumetric autoscan
- Accurately profiles weather cells
- Turbulence detection
- Ground clutter suppression
- Hail and lightning prediction
- Available predictive windshear¹
- Available reactive windshear¹

1. Optional



TEXTRON AVIATION

GARMIN TOUCH

Responsive, icon based touchkeys revolutionize the interface between pilots and electronics.

Dual Garmin Touchscreen Controllers

- 5.7-inch GTC screens
- Radio management
- Simplified flight plan entry and edit



AUTOTHROTTLLES

Experience decreased pilot workload with increased peace of mind while operating with precision.

Fully integrated autothrottles

- Commands power levers to achieve selected airspeed
- Sets the power based on phase of flight and Flight Director modes
- Under speed and overspeed protections
- Automatic Emergency Descent Mode (EDM) - in the event of a rapid depressurization



TEXTRON AVIATION

EMERGENCY AUTOLAND

Enhanced peace of mind on the flight deck and in the cabin.

Emergency Autoland

- Informs ATC of activation
- Calculates flight path to nearest suitable airport
- Terrain Avoidance
- Automatically lands and stops the aircraft
- Shuts engines down



TEXTRON AVIATION

GARMIN GDL® 60

Streamline flight prep with datalink connectivity solutions.

- Automatic airport and navigation database updates
- Upload aircraft and flight data logs
- Transmission of CMC diagnostics data via LTE or WiFi
- Enhanced Garmin Connex PED connectivity – flight plan upload using Garmin Pilot™ App



WELL-EQUIPPED AIRCRAFT

Standard Equipment

Dual Garmin FMS with dual WAAS-enabled GPS
Weather Avoidance Radar
Terrain Avoidance Warning System (TAWS-B)
Traffic Collision and Avoidance System (TCAS 1)
Dual Attitude Heading Reference System
Dual Air Data Computers
Jeppesen ChartView
Garmin Safe Taxi
Auto Mode
Turbulence Detection and Ground Clutter Suppression
Hail and Lightning Prediction
Digital Audio System
ADS-B Out/In Capability
Single Distance Measuring Equipment (DME)

Optional Equipment

Terrain Awareness Warning System Class A (TAWS-A)
SiriusXM Satellite Radio & Wx
Garmin Surface Watch
Satellite Phone System
U.S. or Worldwide Internet
HF-9000 High Frequency Communications
VHF Datalink/ACARS Capability
CPDLC (ATN B-1, FANS-1/A (VHF), FAA Data Comm)
Dual Distance Measuring Equipment (DME)
Reactive Windshear
Predictive Windshear



PRECISELY ENGINEERED



EXTERNAL DIMENSIONS



TRUSTED POWERPLANT

Williams International engines deliver reliable, efficient maintenance and low direct operating costs.

Williams International FJ44-3A engines

- Light weight and easy to maintain
- 2,820 lb of thrust each
- FADEC – Full Authority Digital Engine Control system
- Time between overhaul (TBO) 5,000 hours with TapAdvantage – Blue



DIAGNOSTICS TOOLS

Real-time diagnostics. Rapid answers. Reduced downtime.

Garmin G3000 Central Maintenance Computer (CMC)

- Event driven recorder
- Provides root cause and description for faults

Textron Aviation AReS III

- Records useful data during the previous 1,000+ flight hours
- AReS III is on whenever the aircraft is powered on

LinxUs & LinxUs Air

- LinxUs - Report issues on the ground with a Wi-fi connection
- LinxUs Air - Report issues in flight via satellite



RELIABLE SYSTEMS

Second independent battery

- Set up flight plans and check weather
- Obtain clearances
- All before engine start

Bleed air de-ice systems for wings and engine inlet

- Help maintain the wing laminar flow
- Maximize engine efficiency

Ground flap/lift dump system

- 55° flaps position provides aerodynamic drag for landing rollout
- Activates speed brakes automatically

Trailing link landing gear for smooth landings





ELEVATE YOUR PURSUITS



TEXTRON AVIATION

PERFORMANCE THAT'S POWERFUL, PRECISE AND EFFICIENT

FIELD PERFORMANCE



CLIMB PERFORMANCE



RANGE AND SPEED PERFORMANCE



FIELD PERFORMANCE

Conventional wing design enables short takeoff and landing performance.

Takeoff

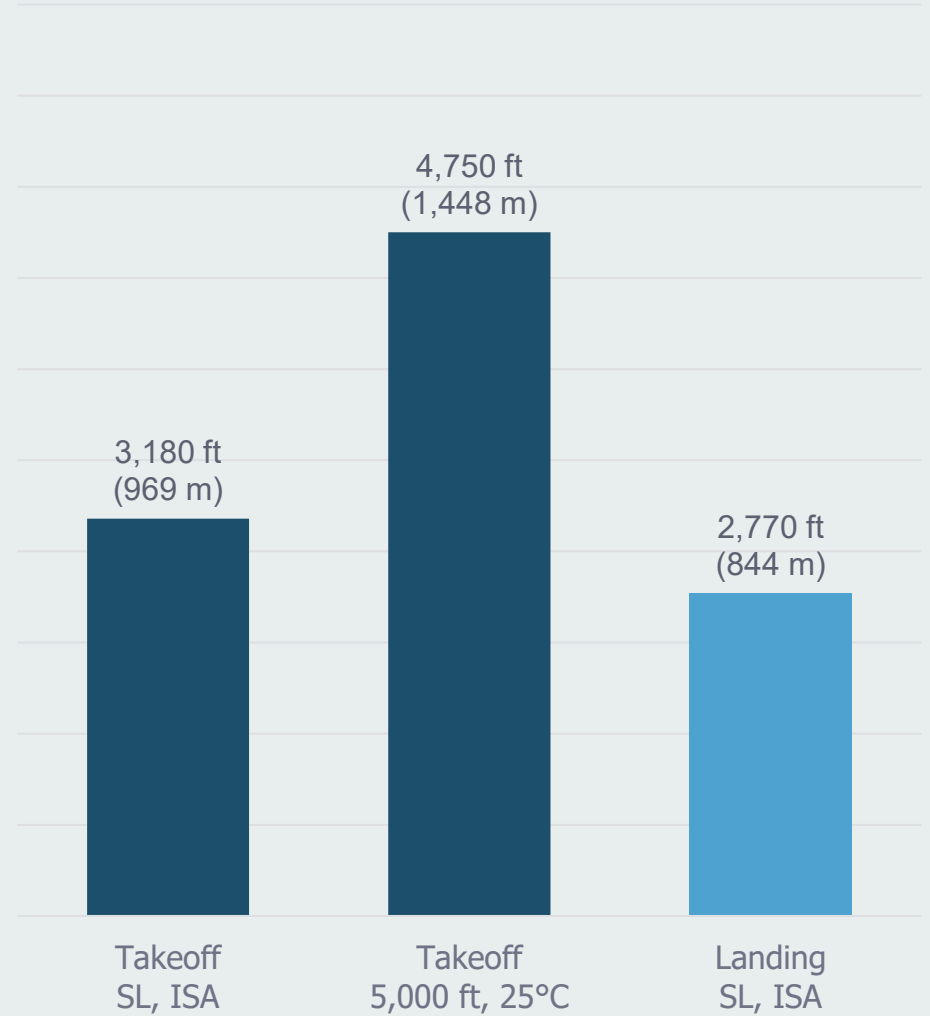
- 13,870 lb (6,291 kg) maximum takeoff weight
- Certified similar to the stringent Part 25 standards

Landing

- 12,750 lb (5,783 kg) maximum landing weight
- Low approach speeds (108 KIAS)



Citation CJ3 Gen3



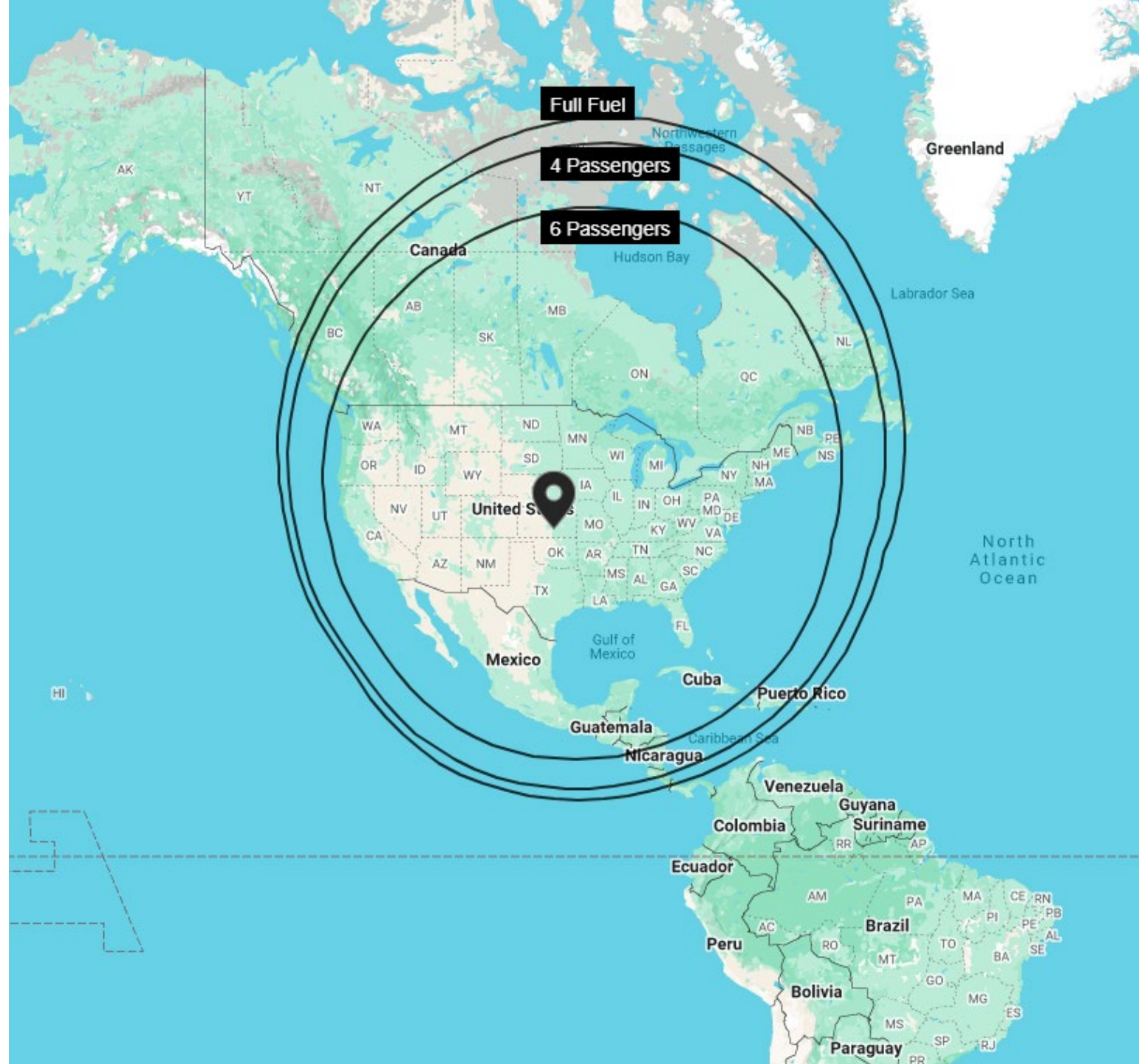
1. Takeoff field length from sea level or 5,000 foot elevation at maximum takeoff weights. Landing distance at maximum landing weight.

TEXTRON AVIATION

PAYLOAD RANGE

Exceptional mission flexibility.

Payload Range	Range	Time
Max Range	2,040 nm	--
4 Passengers	1,830 nm	4:59
6 Passengers	1,600 nm	4:18
9 Passengers	1,270 nm	3:27



1. Range performance data based on standard conditions with 85% probability winds, optimal cruise altitudes, single pilot with NBAA IFR reserves (100 nm alternate). Maximum range based on long range cruise speed. Passenger ranges based on high-speed cruise power.

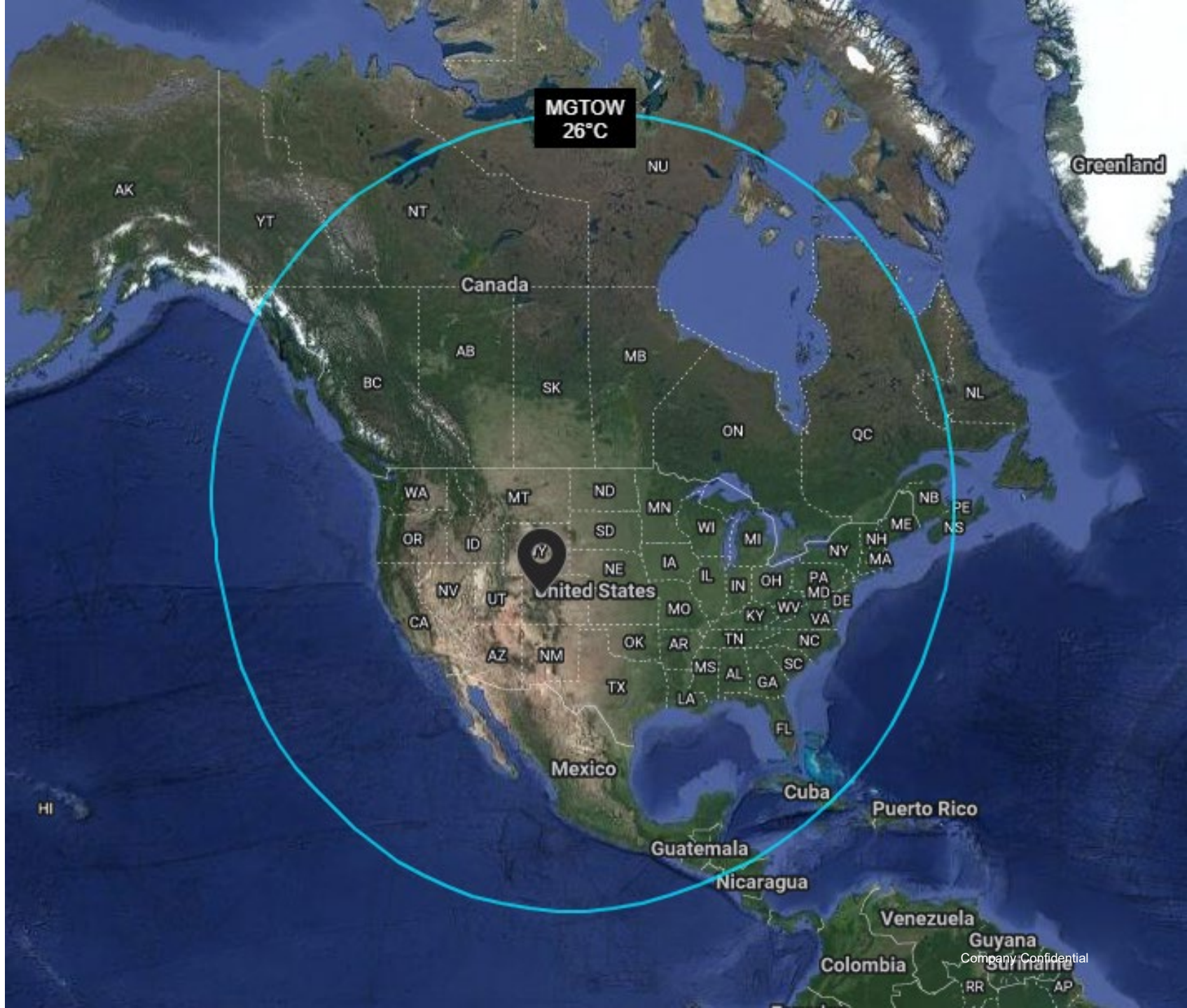
HOT & HIGH

Superior performance out of high elevation airports and hot temperatures.

The Citation CJ3 Gen3 achieves full range from Aspen up to 26°C takeoff temperature.

Aspen (KASE)

- Elevation 7,838 ft
- Runway 8,006 ft

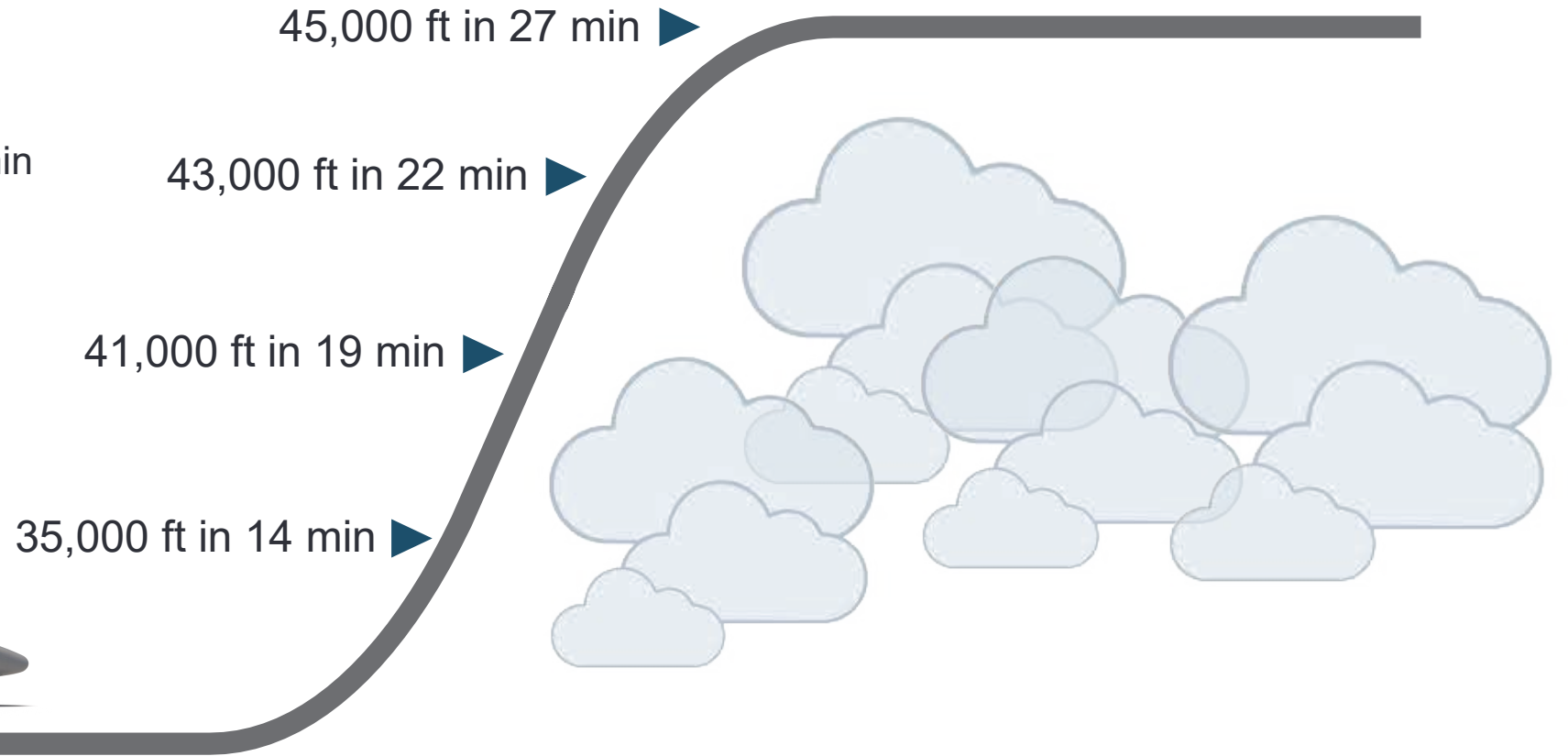


1. Range based on standard conditions with 85% probability winds, high-speed cruise, optimal cruise altitudes, 4 passengers, single pilot with NBAA IFR reserves (100 nm alternate). Takeoff weight based on APG analysis from Runway 33DP1.

SUPERIOR TIME TO CLIMB

Transition through weather rapidly and reach more fuel-efficient cruise altitudes quickly.

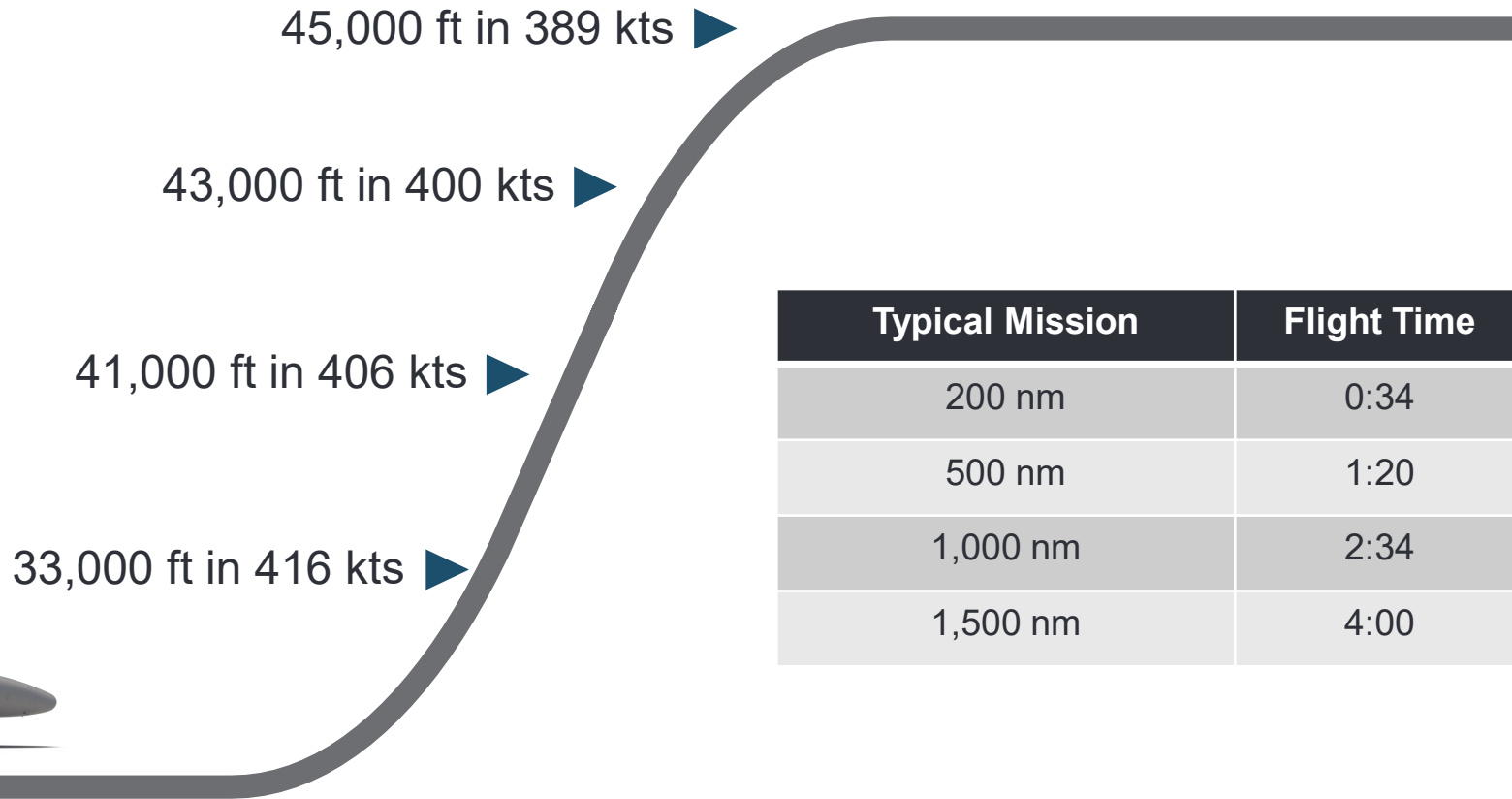
Two engine rate of climb: 4,478 ft/min



CRUISE

Enjoy performance that's powerful, precise, and efficient.

Maximum cruise speed 416 kts
(0.737 M_{MO})



1. Cruise speeds based on high-speed cruise power at a mid-cruise weight. Flight times based on zero wind mission with 4 passengers, single-pilot, high-speed cruise and NBAA IFR fuel reserves (100 nm alternate).

WEIGHTS

CITATION CJ3 GEN3	IMPERIAL (LB)	METRIC (KG)
Maximum ramp	14,070	6,382
Maximum takeoff	13,870	6,291
Maximum landing	12,750	5,783
Maximum zero fuel	10,675	4,842
Maximum fuel	4,710	2,136
Basic operating weight (1 crew)	8,540	3,874
Useful load	5,530	2,508
Maximum payload	2,135	968
Full-fuel payload	820	372





DESIGNED FOR WHAT'S POSSIBLE



CITATION CJ3 GEN3 INTERIOR

REFRESHMENT CENTER

High power outlet option for personal coffee maker

SIDE-FACING SEAT

Optional fold down seat back for 50 lb of additional stowage

TECHNOLOGY

Wireless charging trays and USB-C charging

ACCENT LIGHTING

Cupholders, under table and side pockets



CABIN ENTRY

Redesigned step with assist handle

CABIN SEATS

Tracking capability
Swivel (optional)

LAVATORY

Externally serviceable
Belted for added seat

TEXTRON AVIATION

CITATION CJ3 GEN3 INTERIOR

EXTENDED REFRESHMENT

Available low boy cabinet for can storage, catering tray, general storage



LAVATORY
Optional sink
and vanity

TEXTRON AVIATION

ENTRY

Improved cabin entry

- New materials
- Assist handle for ease of entry and egress



FORWARD CABIN

Redesigned refreshment center allows for beverage and food preparation with a durable surface storage system.

- ① New control switch panel
- ② High power outlet for Keurig or Nespresso¹
- ③ Ice storage
- ④ Large trash container



1. Optional

TEXTRON AVIATION

SIDE-FACING SEAT

An available side-facing seat with optional fold-down capabilities offers extra storage.

Use the seat to transport a passenger or fold it down for up to 50 pounds of additional in-flight, accessible storage.



**M2 Gen2 installation shown*

Company Confidential

TEXTRON AVIATION

FORWARD CABIN

Extended refreshment center for additional stores

- Soda can storage
- Catering tray storage
- General storage
- Surface for serving or storage

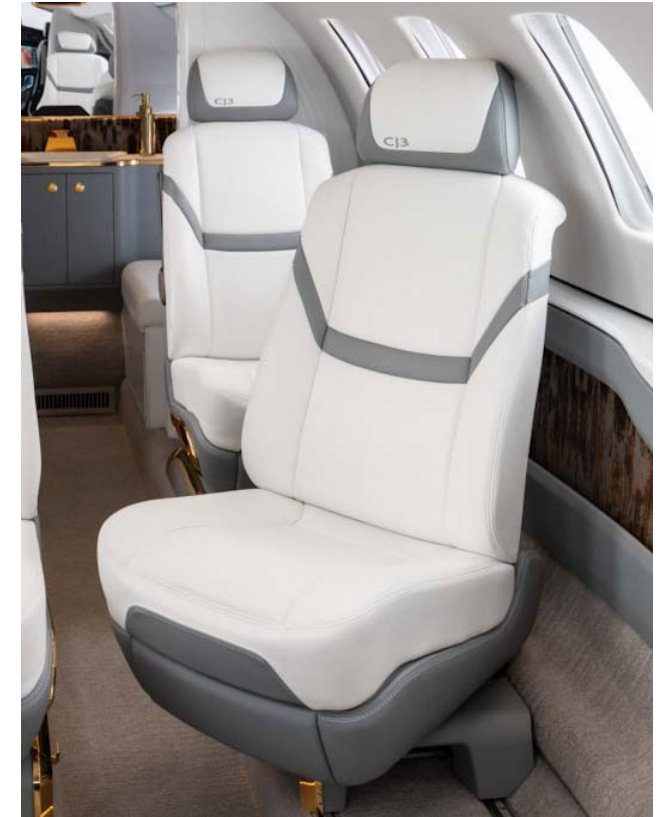


TEXTRON AVIATION

SEATING

Redesigned cabin seats provide convenient and comfortable seating configurations.

- Improved, more agronomical seat control mechanism
- Tracking capability on base and floor
- Redesigned swivel (optional)



TEXTRON AVIATION

LIGHTING

New accent lighting

- Cupholders
- Under table
- Side pockets
- RGB (Red, Orange, Yellow, Green, Blue, Green, Blue, Purple, White)



TEXTRON AVIATION

SIDE LEDGE

Side ledge

- Deeper, larger cupholders
- Top loading executive and slimline tables
- Side pockets for additional storage of small items
- Wireless phone charging trays and USB-C charging ports at every cabin pedestal seat



TEXTRON AVIATION

LAVATORY

Reimagined lavatory space that blends form and function.

- Externally serviceable
- Available sink and vanity¹ with dedicated water supply
- CoolView® lavatory skylights approximately 4 inches in diameter



1. Optional

TEXTRON AVIATION

DESIGN YOUR CJ3 GEN3

Six different interior collections to start

BISQUE



SANDSTONE



GLACIER



TOFFEE



JET BLACK



TRUFFLE







YOUR BEST INVESTMENT

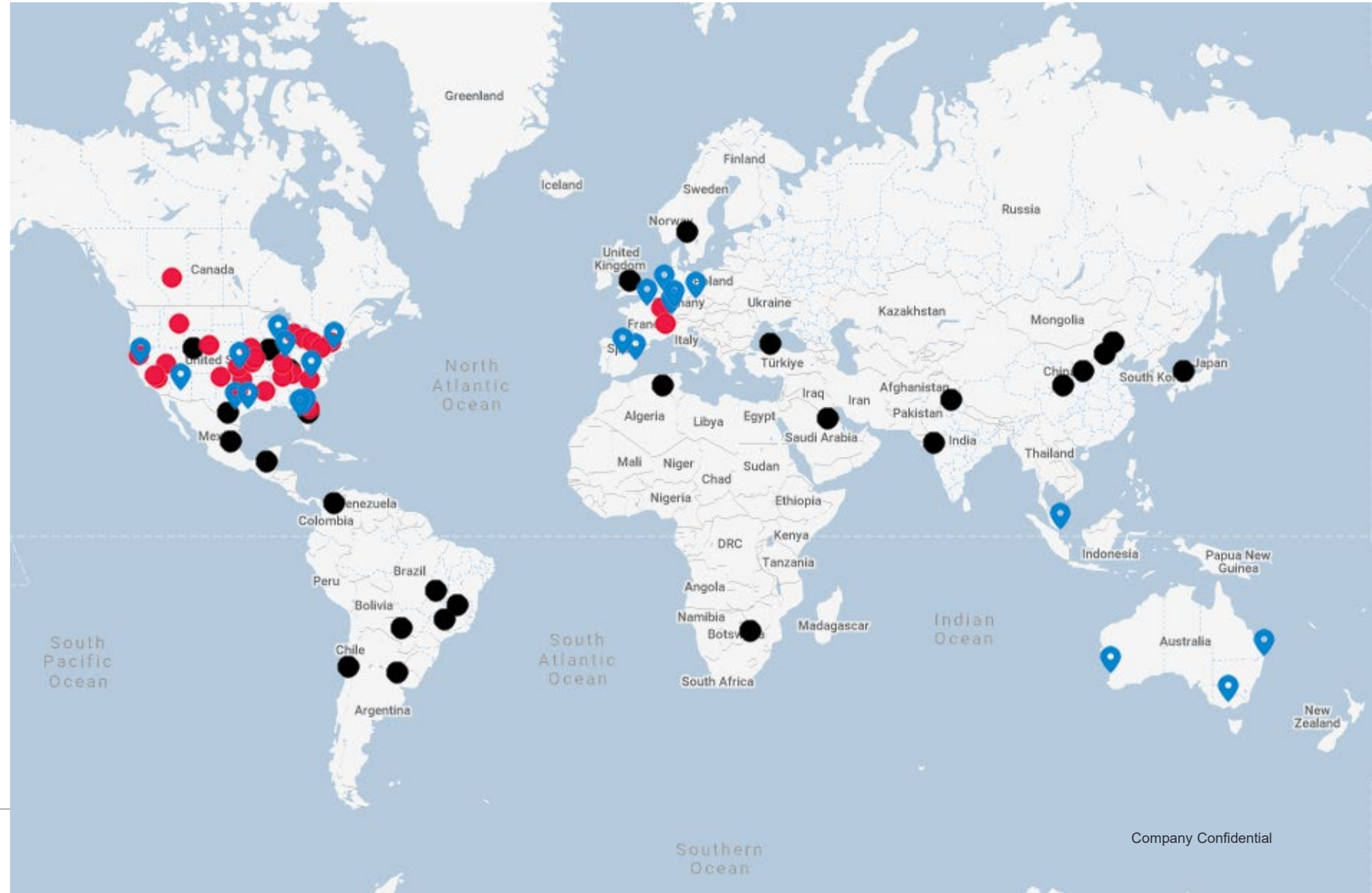


YOUR CONNECTION TO MANUFACTURER SUPPORT

 20 Textron Aviation owned Service Centers

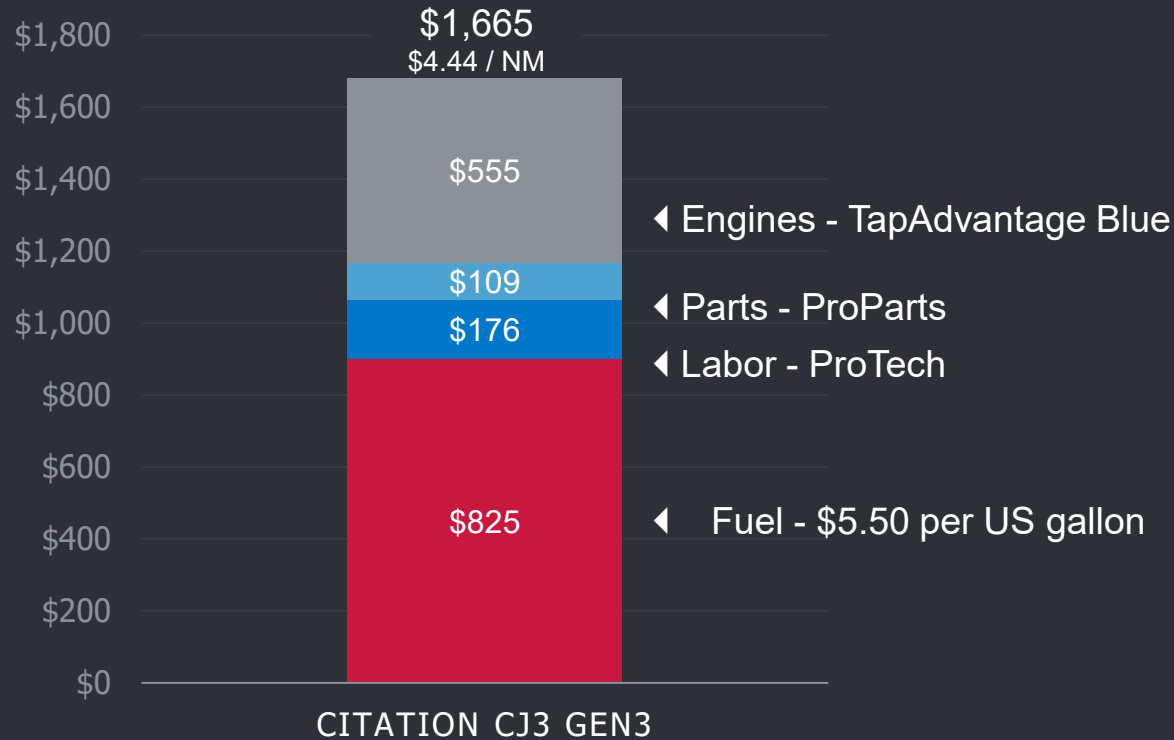
 65+ Mobile Service Units strategically placed around the world allowing us to bring the service center to you

 Authorized Facility



LOW OPERATING COSTS

Hourly Operating Costs
5-Year Average, 300 Hour Annual Utilization



1.- Speed and fuel flow calculated from Operating Manual at high-speed cruise. Based on 2026 ProAdvantage Program Americas Hourly Rates.= Parts based on ProParts, Labor based on ProTech at 300 hour annual utilization and Engines based on TapAdvantage Blue Americas.



WARRANTY

Citation CJ3 Gen3

Major airframe	5 Years / 5,000 Hours
Parts – Made by Manufacturer	5 Years / 5,000 Hours
Parts – Made by Vendor	3 Years / 1,800 Hours
Standard Avionics	5 Years / 5,000 Hours (Garmin)
Engines	3 Years / 2,000 Hours Prorated after 1,500 Hours
Paint and Interior	1 Year





CONTACT YOUR TEXTRON AVIATION REPRESENTATIVE
U.S. +1.844.44.TXTAV | INTERNATIONAL +316.517.8270 | TXTAV.COM

@ 2024 Textron Aviation Inc. All rights reserved.